



ULTIMA
COMPOSITE

Get To Know The World's First **Eco-Friendly** Composite Fifth Wheel

ULTIMA
COMPOSITE

3D Computer Model The **All NEW** Ultima 27RL

The Ultima range of Fifth Wheels has been developed from the ground up for overseas markets such as Australia, New Zealand, & the UK. The Ultima is designed to be towed by smaller international standard pickups that drive on the left side of the road, e.g. Nissan Navara, Mazda BT50, etc. The Ultima was designed jointly in Australia and the US to withstand the rigors of the Australian outback. All major structural components are generally rated 30% above standard requirements, e.g. each axle assembly, springs, wheels, tyres, and brakes are rated at two (2) tonnes (2000 kg) where only 1500 kg was required. The king pin has been tested and certified at over 4.5 tonnes when it only needs to pass 3.5 tonnes.

The Ultima is not just a name but how we approach the product development. We endeavour to bring you the ultimate 5th wheel with the ultimate quality, finish, standard items, layout, bathroom, bedroom, living area, components, serviceability, storage, appliances, suspension, pin box, and construction. All this in an environmentally friendly and a value for money package that meets all local compliancing standards.



Shown with optional Club Lounge

Not rated Off-Road. Graded dirt road only.

Why Choose Ultima?

Construction

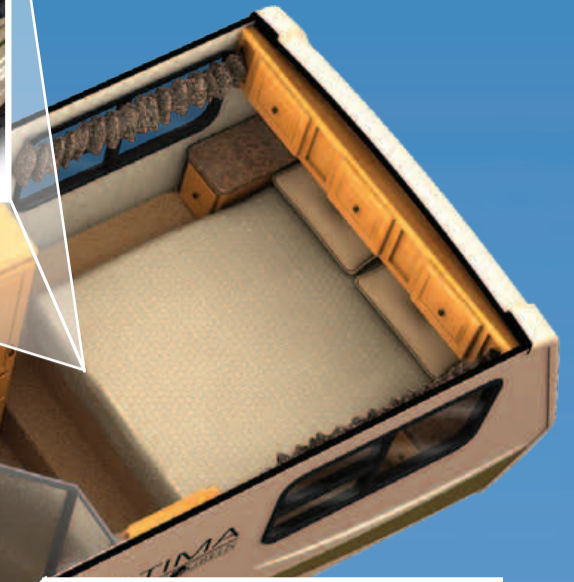
Compositek™ is an eco-friendly composite material, lightweight, strong, water resistant & green! Compositek™ engineered "green" materials replace traditional building materials and is chemically engineered to meet the RV industries stringent standards. COMPOSITEK™ engineering utilizes higher quality, stronger materials, to increase the longevity.

Compositek™ construction eliminates the use of wood substrate in the floors, walls and roof – waterproof composite materials will not rot if wet and mildew resistant -recyclable, eco-friendly, formaldehyde and VOC free. Water has no effect on Compositek™.

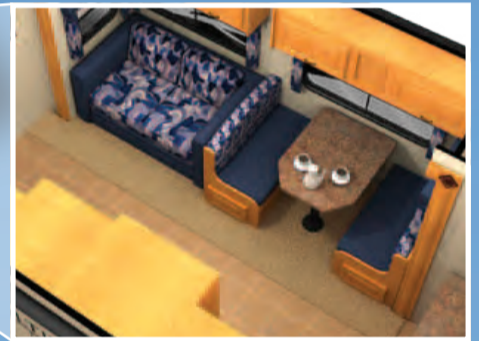
Lauan is called "Brazilian mahogany" – it is hardwood right out of the rain forests. Lauan is imported from tropical rain forests from South America to Indonesia. Ultima RV eliminates 50 sheets of lauan per trailer, replacing it with stronger, lighter Compositek™. We also replaced three to four sheets of plywood with composites in the interior furnishings.



3D Computer Model
NEW Ultima 27RK



Optional Club Lounge



The Ultima 27RK rear kitchen.

- Designer matching stainless steel appliances and range hood are standard
- Standard 240 volt S/S microwave & convection oven
- Optional full size washer, steam washer/dryer (pictured), or dishwasher
- Granite style solid surface counter tops standard
- Unequaled storage in its class - overheads, and cupboard and drawer space
- Largest 3 way fridge in class, Dometic 8 cu ft 240 volt/LPG/12 volt AGA
- SMEV, Italy's #1 stove/griller/oven combo (AGA)
- Standard LED internal lighting reduces heat and conserves battery life



The Ultima 24MK & 27RL kitchen.

- Designer matching stainless steel appliances and range hood are standard
- Standard 240 volt S/S microwave, and convection oven
- Granite style solid surface counter top standard
- Lots of overheads, cupboard & drawer space
- Largest 3 way fridge in class, Dometic 8 cu ft 240 volt/LPG/12 volt AGA
- SMEV, Italy's #1 stove/griller/oven combo (AGA)
- Large pantry
- Entertainment centre with Dolby Digital surround sound in living areas AM/FM/CD/MP3/DVD with speakers in living area, bedroom and external
- Optional 22 inch LCD HD tuner TV with outside hook up standard
- Standard safety gas detector
- Standard LED internal lighting reduces heat and conserves battery life.



The Ultima 27RK pantry, entertainment centre and desk.

- Desk with three drawers standard w/chair or with optional recliner of your choice
- Entertainment centre with Dolby Digital surround sound in living areas AM/FM/CD/MP3/DVD with speakers in living area, bedroom and external
- Standard pop-up 32 inch LCD HD tuner TV w/outside hook up
- Standard safety gas detector



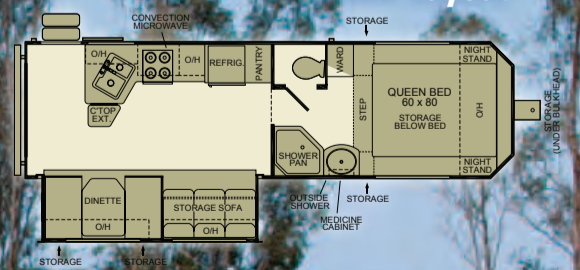
The Ultima 27RK & 24MK bedroom, bathroom and shower.

- 80 inch x 60 inch Queen bed with gas lifters to access storage under make it the best bed and bedroom in its class
- Ultra comfortable mattress manufactured from recycled plastic bottles
- Night stands and overheads
- Lots of storage for shoes under step
- Optional second TV in bedroom

Separate Toilet

- Full flush porcelain toilet in its own room
- Best shower, toilet combo in its class

24MK Layout



The Ultima Advantage. We've got it, standard!

Exterior

- Automotive Bronze High Gloss Gel Coat Exterior
- Aluminium Framed, Dark Tinted Safety Glass Windows
- Diamond Plated Steel Rear Bumper w/Sewer Hose Storage
- Door Side Patio & Security Lights
- Extra Door Side TV Cable Hook-Up
- Exterior 240V Power Point
- E-Z Lube Hubs
- 15" Aluminium Wheels
- Exterior Speakers
- Rear Stabilizers (2)
- Electric Front Jacks (2)
- Radius Corner Entry Doors, Baggage Doors & Windows
- Privacy Glass Entry Door
- Accent Coloured Aluminium Skirting
- Accent Coloured Fender Skirting
- Rain Gutters & Extended Down Spouts
- Break Away Switch
- Composite Exterior
- LCD TV Bracket / Hook Up
- Composite Baggage Doors
- Reese Rear Pivot Extended Pin Box
- Dexter 2000kg Axles, Springs, Electric Brake Hubs & Dampened (Shock Absorbing) Load Sharing (with Full Aust/NZ Warranty)

Interior

- Accordion Style Dividers (where applicable)
- Solid Wood Mortised Cabinet Doors
- Screwed & Glued Cabinetry
- LED Cool Running 12V Interior Lighting Package
- Decór Mirror
- Raised Panel Wood Overhead Cabinet Doors

- Convertible Dinette w/Storage
- Wall Mounted Interior Light Switches
- Padded "No Crack" Vinyl Flooring Throughout

Kitchen

- Stainless Steel Power Exhaust Range Hood w/Light
- Wood Knife Rack
- Plywood Drawers w/Ball Bearing Guides
- Mini Blinds
- Dometic SS RM4805 (AGA Approved) 8 cubic ft 224 litre 12V/LPG/240V Refrigerator/Freezer
- SMEV Stainless Steel 4 Burner, Griller, Oven (Aust Model – AGA Approved)
- Stainless Steel 240 Volt Microwave & Convection Oven & Surround
- Plumbed & Wired for Washing Machine

Bathroom

- Skylight over Separate Shower
- Large Medicine Cabinet/Mirror
- Recessed Over Head Vanity Light
- Toothbrush Holder
- Water Saver Hand Sprayer in Shower
- Power Exhaust Fan
- Towel Bar
- Toilet in Separate Room

Bedroom

- Comfort Fibre Eco Pillow Queen Bed & Mattress – 6'8" L x 5' W
- Bullet Reading Lights Above Bed
- Night Stands
- Double 240V Outlet at Each Night Stand
- Hanging Wardrobe w/Four Drawers
- Overhead Storage
- Coordinating Designer Comforter
- Lift Up Bed w/Gas Struts & Storage
- TV Jack & LCD TV Bracket
- Large Storage Area Under Fold Up Step to Bedroom

Utilities

- Satellite/Cable Hook-Ups
- Wiring to Roof for Satellite/Solar Panel Hook Up
- Water Pump/Filter in Own Compartment Accessible from Exterior
- CO, LP, Smoke Detectors
- Fire Extinguishers (2)
- Probeless Tank Monitors
- One-Touch Systems Monitor Panel
- 240V – 12V 55 AMP Converter

Ultima Value Package (included)

- Fully Enclosed Underbelly
- Five Side Aluminium Structure (3yr Warranty)
- AM/FM/CD/DVD (Coded for Aust/NZ Zone 4) w/Interior/Exterior Speakers
- 2 x 9kg Gas Bottles with Aust Model Auto Gas Regulator (Gas Bottles Not Supplied for NZ)
- 6 Gallon Suburban (Aust Model – AGA Approved) LPG/240V Water heater w/DSI
- Porcelain Toilet w/Foot Flush Pedal
- High Output Exhaust Fan in Bedroom
- Outside Shower
- A&E Power Awning
- Slide Topper
- Spare Tyre & Carrier Mounted Under Rear of Chassis
- Black Tank Flush
- Swing Out Grab Bar
- Pleated Shades
- Fibregless Front Cap with LED Lights
- 13,500 BTU Dometic Ducted 240V A/C w/Heating
- Radial Tyres
- TV Antenna

Additional Items

- 3 Year Limited Structural Warranty
- 2 year Limited Bumper to Bumper Warranty
- Built with Recyclable Eco-Friendly Materials
- Manufactured to Australian Standards (VSB-1)

Subject to change without notice.

Specifications Your Ultima

Ultima 27RK/RL

- Dry (Kerb) Weight Approx 2850kg (Excluding awning & A/C)
- Payload Approx 650kg
- Pin Weight Approx 480/500kg RL/RK (Dry & Level)
- 3490kg ATM
- Internal Length Approx 27'6" / 8382 mm
- External Overall Length Approx 30ft (9144 mm)
- External Width 7'4" / 2235mm (Outside Wall to Outside Wall)
- Full Length Slide-Out Depth 42" / 1067mm
- External Height Excluding A/C 10'1" / 3050mm
- Fresh Water Capacity 160L
- Grey Water Capacity 120L
- Galley Grey Water Capacity 120L
- Black Water Capacity 120L
- Alloy Wheels 15in
- Power Awning Length 16ft

Ultima 24MK

- Dry (Kerb) Weight Approx 2700kg (Excluding awning & A/C)
- Payload Approx 800kg
- Pin Weight Approx 420kg (Dry & Level)
- 3490kg ATM
- Internal Length Approx 25' / 7620mm
- External Overall Length Approx 27' / 8230mm
- External Width 7'4" / 2235mm (Outside Wall to Outside Wall)
- Full Length Slide-Out Depth 42" / 1067mm
- External Height Excluding A/C 10'1" / 3050mm
- Fresh Water Capacity 160L
- Grey Water Capacity 120L
- Galley Grey Water Capacity 120L
- Black Water Capacity 120L
- Alloy Wheels 15in
- Power Awning Length 16ft

Every day is an adventure.
Live it with Ultima.

More than just good looks –
More to love.

Superior aerodynamic design.

- Bullet shaped front cap allows for better articulation and less wind resistance
- The shaped front cap allows the unit to be positioned closer to the rear of the cab, allowing improved laminar air flow between the tow unit and the Ultima. It also allows the pin to be positioned directly over the rear axle improving handling and safety.
- Unlike a caravan the lack of a draw bar and with the Ultima's overlap of the tow vehicle it allows for a shorter overall length
- The combined towing length is less than many caravans with half the interior space.
- The fifth wheel configuration will easily out handle most larger caravans
- Every aspect of the design has been designed to improve fuel economy. Ultra light weight construction combined with the front cap and flat underbelly gives the Ultima the best fuel economy in its class.
- LED cap lights aid in those night hook up and unhook procedures

External access to water pump, plumbing and filter.

For ease of access, service and repair the water pump and filter are enclosed in a lockable exterior compartment.

Dexter's revolutionary new shock absorbing load sharing suspension, tested and proved in Australia's outback.

Warranted in Australia for Australia by Dexter in writing.





Buying Local. **Your Best Option**

Enjoy the convenience of local representatives who will help you understand all the features of your new RV and answer any questions you have.

Before taking your new RV home, you'll receive a complete walk-through demonstration of all of its systems and options, and will be introduced to several key members of the Dealer's staff who will be able to help you with any future questions.

Your local dealership routinely gives their own customers priority scheduling when it comes to scheduled maintenance and/or repair work, making sure you're one of their local customers saves you time by getting you scheduled sooner!

Your Authorised Ultima Dealer:

www.ultimaRV.com.au